

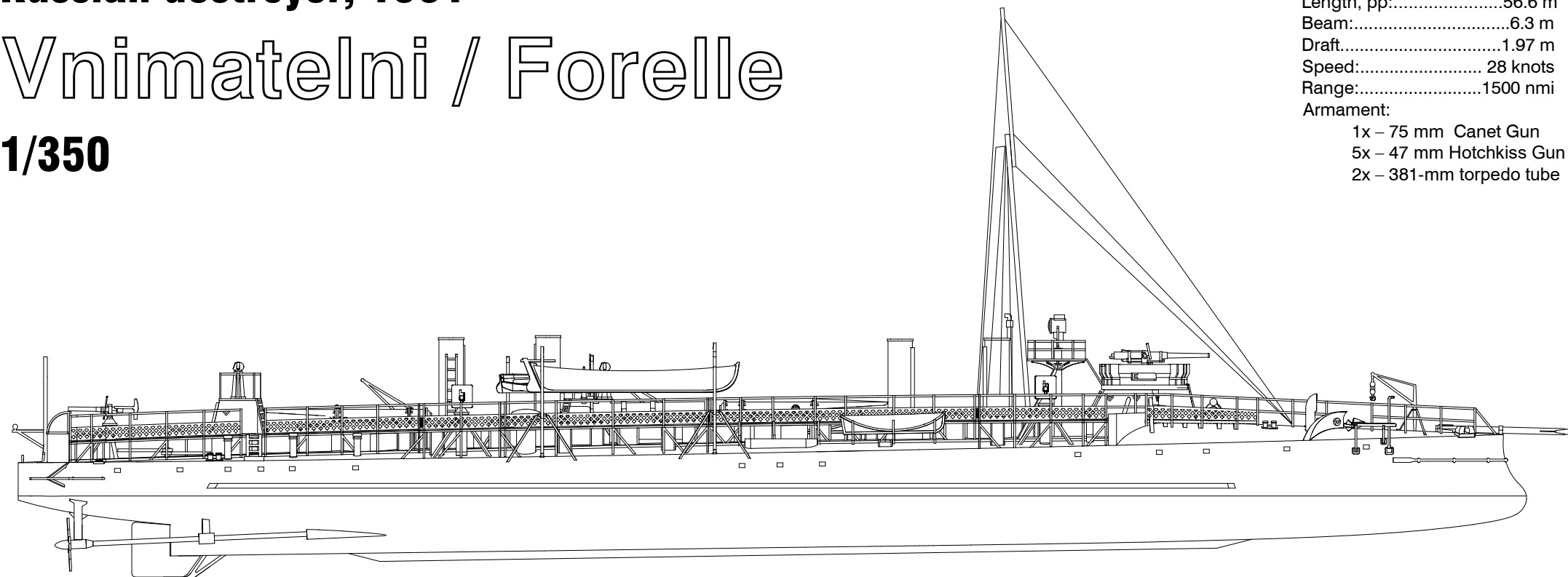
# Russian destroyer, 1901

## Vnimatelni / Forelle

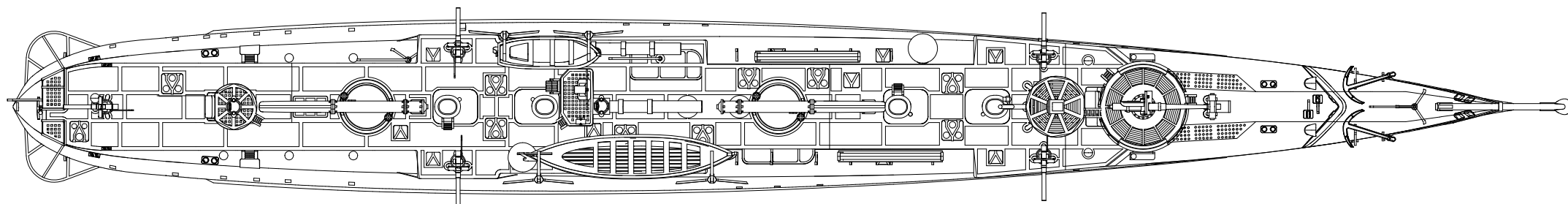
1/350

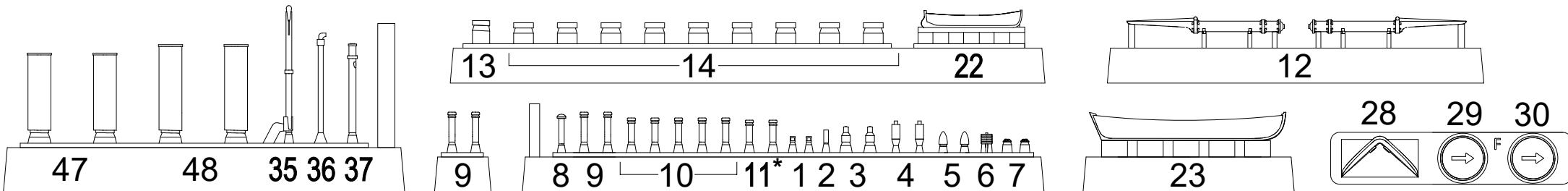
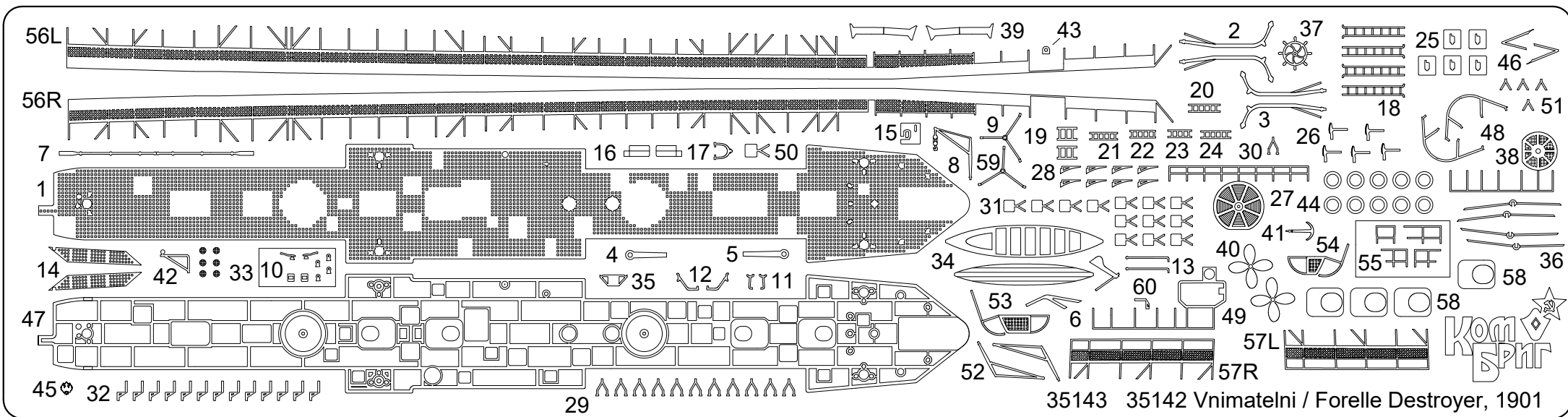
Displacement:.....312 t  
Length, pp:.....56.6 m  
Beam:.....6.3 m  
Draft.....1.97 m  
Speed:..... 28 knots  
Range:.....1500 nmi  
Armament:

1x – 75 mm Canet Gun  
5x – 47 mm Hotchkiss Gun  
2x – 381-mm torpedo tube

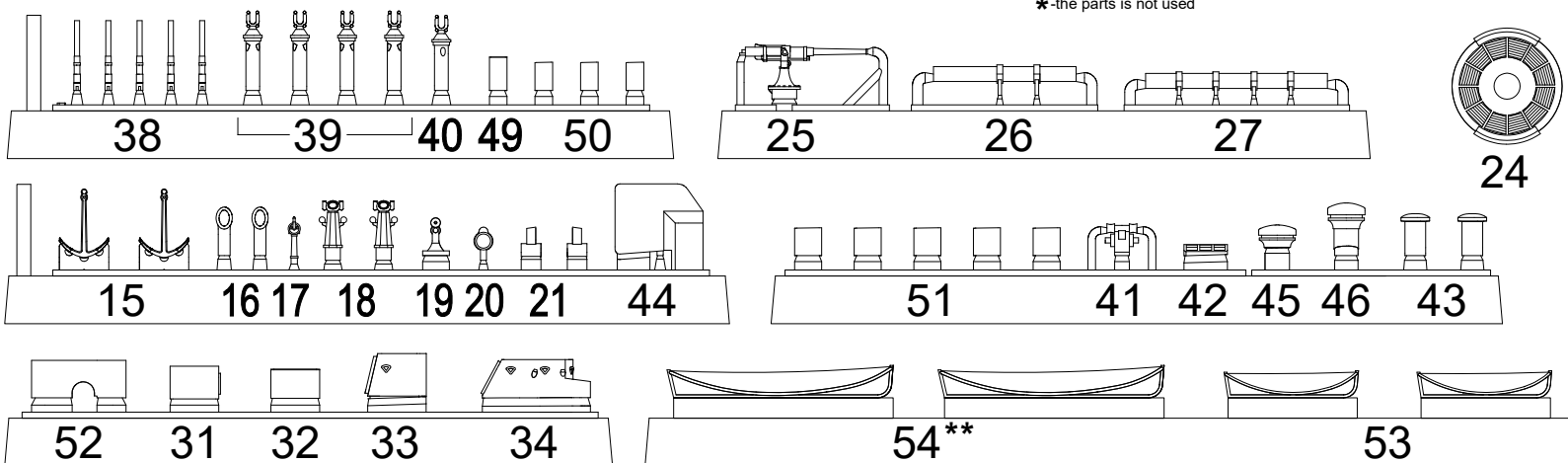


1m 0 10m 20m

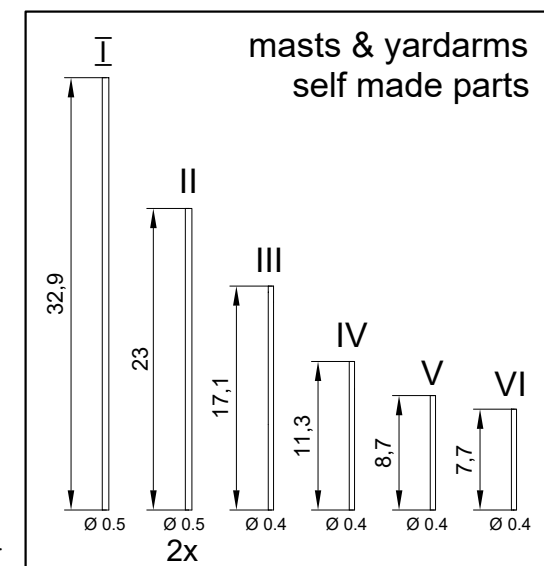




\*-the parts is not used



\*\*-additional parts

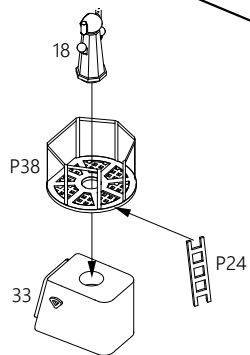


Please note that the assembly guide reflects the position of the parts when installed only, and not the exact order of the assembly.  
To download the assembly instructions in PDF (high resolution) please visit [www.combrig-models.com](http://www.combrig-models.com)

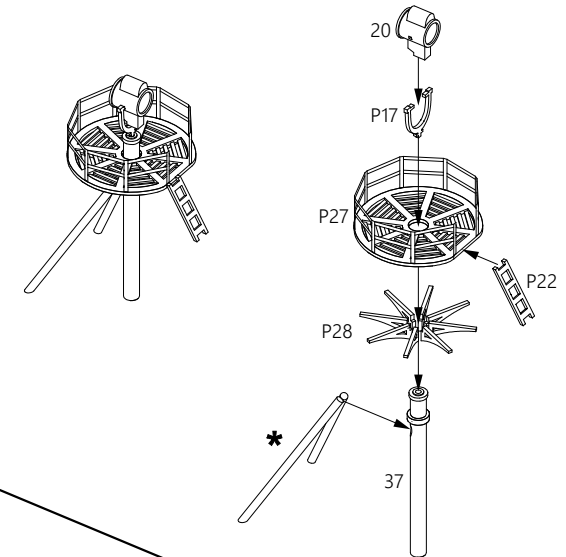
For more info on Combrig kits see: [www.combrig-models.com](http://www.combrig-models.com) [www.steelnavy.net](http://www.steelnavy.net) [www.modelwarships.com](http://www.modelwarships.com) 35142



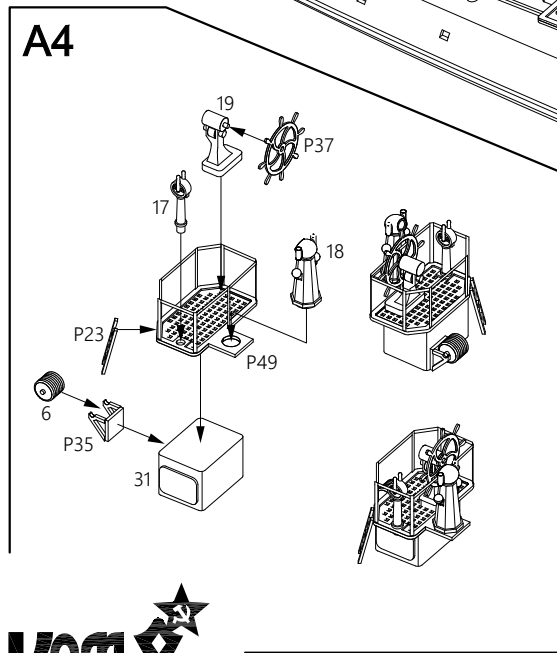
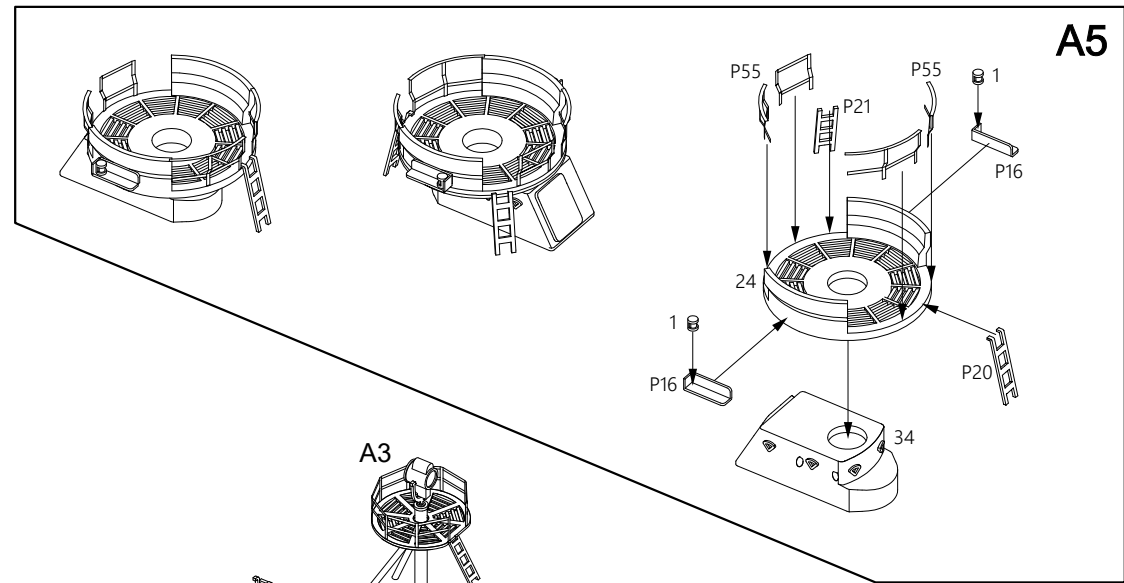
A2



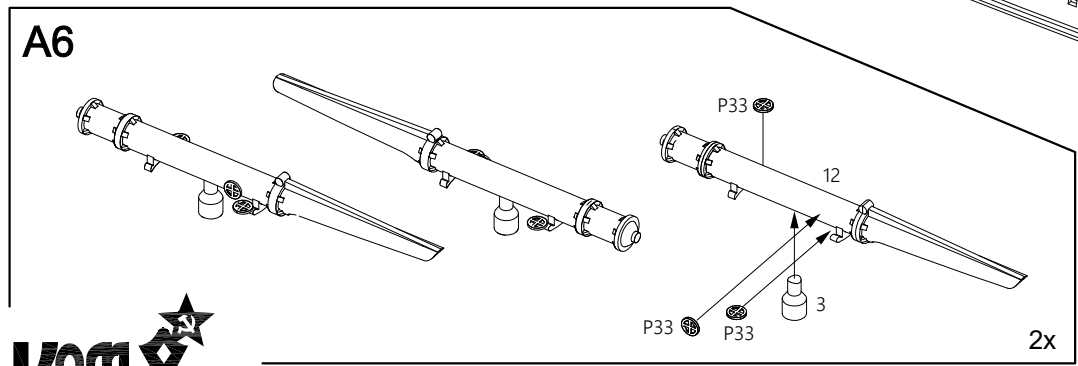
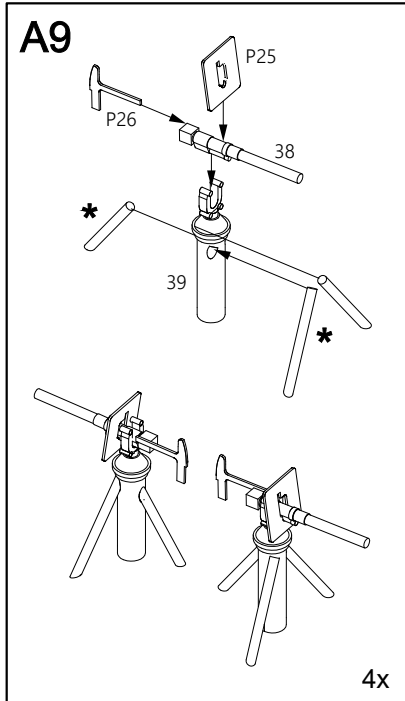
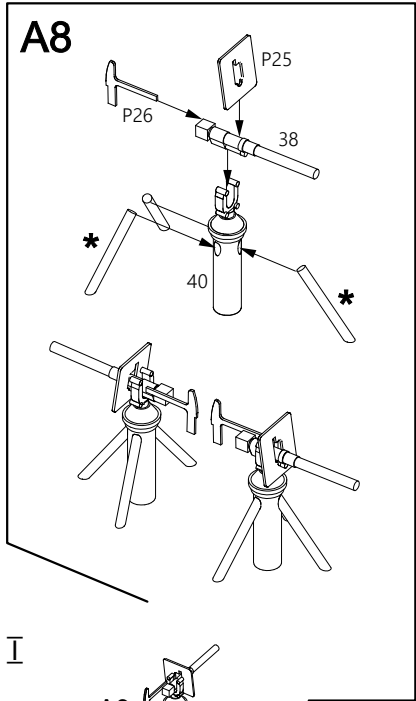
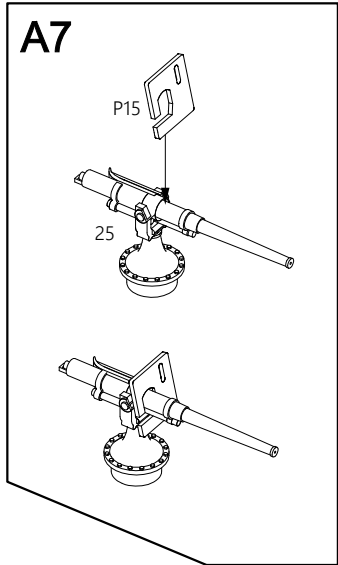
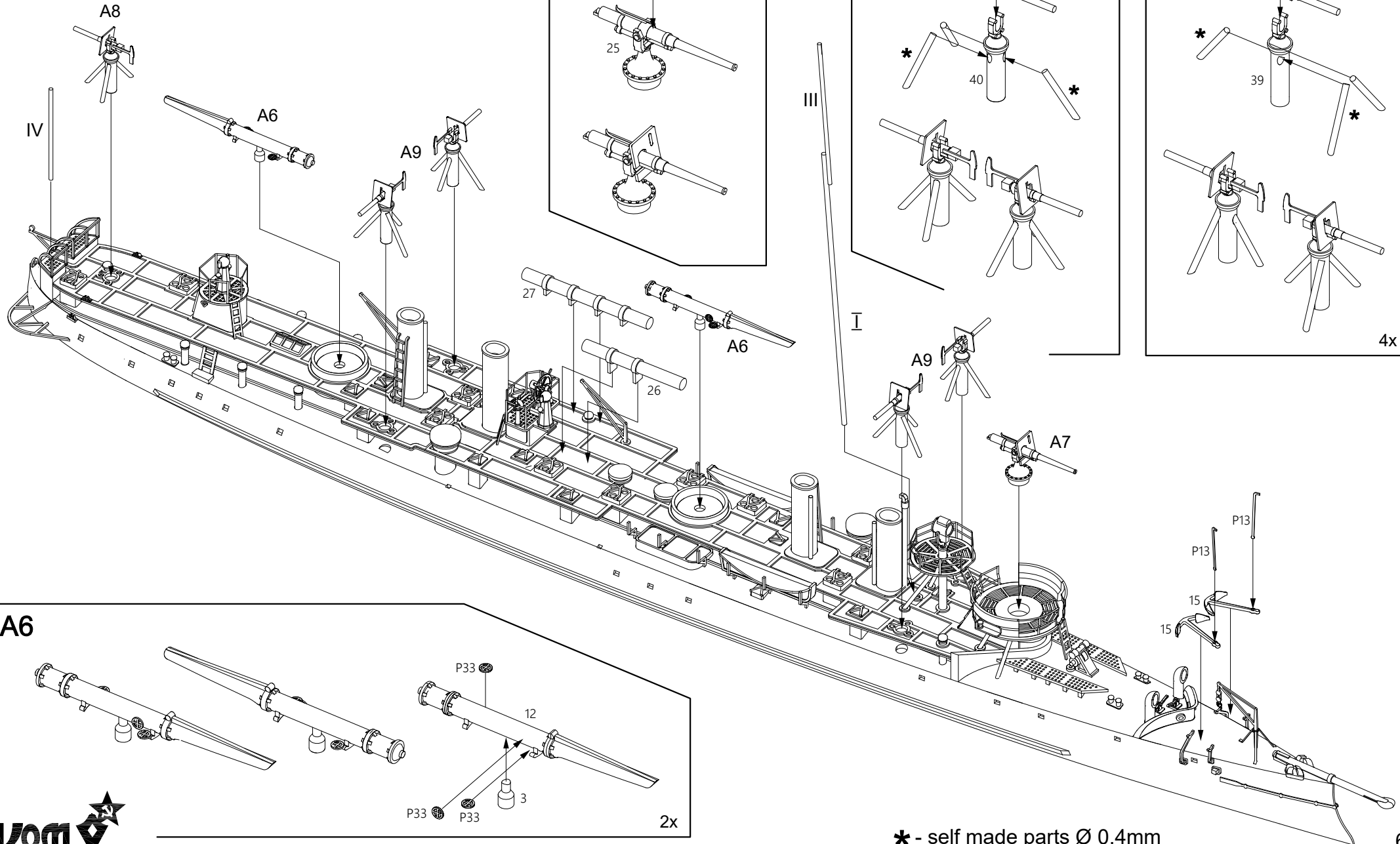
A3



\* - self made parts Ø 0.4mm



\* - self made parts Ø 0.4mm



\* - self made parts Ø 0.4mm



